

cases

Indoor P2.5 Project in KSA

Project Size:
32 cabinets
For: TV Station
Project Time:
March, 2016



Outdoor P6 for Australia

Project Size:
About 96 Sq.m
For: Events Company
Project Time: 2013



ADD:ADD:Building A, Hengyi Industrial Park, No. 19 Tianliao Road, Guangming New District, Shenzhen, China
 Cell: (+86)-159 99616652
 Fax: (+86)-755-27380982
 Hot-Line: (+86)755-27387271
 Email: sales@led-star.com
 Website: http://www.led-star.com



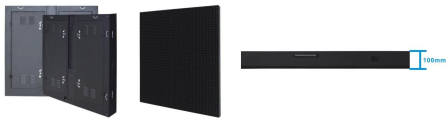
Hot Electronics Co., Ltd
Trustworthy Quality From The East

Fixed Installation Series

Professional Manufacturer of LED display



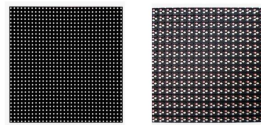
Fixed Installation Series -- Indoor



Fixed Installation Series --- Indoor

Pixel Pitch(mm)	3	4	5	6
LED Configuration	SMD2121	SMD2121	SMD3528	SMD3528
Module Dimension	192*192	256*128	320*160	192*192
Module Resolution	64*64	64*32	64*32	32*32
Cabinet Dimension	Customized	Customized	Customized	Customized
Viewing Angle(H/V)	140/140	140/140	140/140	140/140
Brightness(Cds/m2)	>1200	>1200	>1200	>1200
Refresh Rate(Hz)	1920-3840	1920-3840	1920-3840	1920-3840
Gray Scale(Bit)	14	14	14	14
Power Consumption (Max/Avg W/m2)	400/150	400/150	400/150	400/150
Ip Rate(Front/Rear)	30/54	30/54	30/54	30/54
Working Voltage(V)	110/220	110/220	110/220	110/220
Working Temperature	-20-65°C	-20-65°C	-20-65°C	-20-65°C
Working Humidity	10%-95%	10%-95%	10%-95%	10%-95%
Serviceability	Front/Rear			
Compliant Standard	CE,FCC,ROHS,EMC,BIS			

Fixed Installation Series -- Outdoor

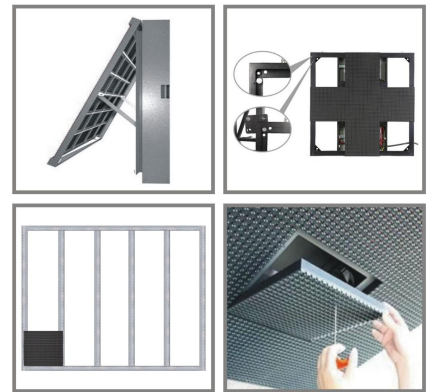


Fixed Installation Series--- Outdoor

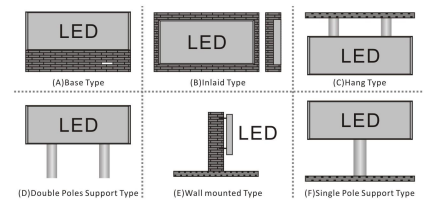
Pixel Pitch(mm)	3	4	5	6	8	10
LED Configuration	SMD1921	SMD1921	SMD2727	SMD3535	SMD3535	SMD3535
Module Dimension	192*192	256*128	320*160	192*192	256*128 320*160	320*160
Module Resolution	64*64	64*32	64*32	32*32	32*16 40*20	32*16
Cabinet Dimension	Customized	Customized	Customized	Customized	Customized	Customized
Viewing Angle(H/V)	140/140	140/140	140/140	140/140	140/140	140/140
Brightness(Cds/m2)	5000-6500	5000-6500	5000-6500	6500-9000	6500-9000	6500-9000
Refresh Rate(Hz)	1920-3840	1920-3840	1920-3840	1920-3840	1920-3840	1920-3840
Gray Scale(Bit)	14	14	14	14	14	14
Power Consumption (Max/Avg W/m2)	400/150	400/150	400/150	400/150	400/150	400/150
Ip Rate(Front/Rear)	65/65	65/65	65/65	65/65	65/65	65/65
Working Voltage(V)	110/220	110/220	110/220	110/220	110/220	110/220
Working Temperature	-20-65°C	-20-65°C	-20-65°C	-20-65°C	-20-65°C	-20-65°C
Working Humidity	10%-95%	10%-95%	10%-95%	10%-95%	10%-95%	10%-95%
Serviceability	Front/Rear					
Compliant Standard	CE,FCC,ROHS,EMC,BIS					

The main characters of this kind of display are:

- Easy installation and light weight can make it amount in the wall or lift against the wall.
- Front access design allows to make thicker LED display, which is suitable for some special locations where there is no more space for rear maintenance.
- Cabinet front service type is suitable for small size screen while module front service type is suitable for any size



Installation Type Example



Above six installation types are most common for outdoor LED display. Base/Inlaid, Hang, Double Poles Support are most common for indoor LED display.