



Hot Electronics Co.,Ltd
Trustworthy Quality From The East



📍 ADD: Building A, Hengyi Industrial Park, No. 19 Tianliao Road,
Guangming New District, Shenzhen, China

☎ Cell: (+86)-159 99616652

📠 Fax: (+86)-755-27380982

👤 Hot-Line: (+86)755-27387271

✉ Email: sales@led-star.com

🌐 Website: <http://www.led-star.com>



Professional Manufacturer of LED display



ABOUT US

Founded in 2003, Hot Electronics Co., Ltd is a global leading LED display solution provider engaged in LED products development, manufacturing, as well as worldwide sales and after-sales service. With several production base of over 30,000sq.m and 20 production line, we can reach production capacity 15,000sq.m high definition full color LED display each month.

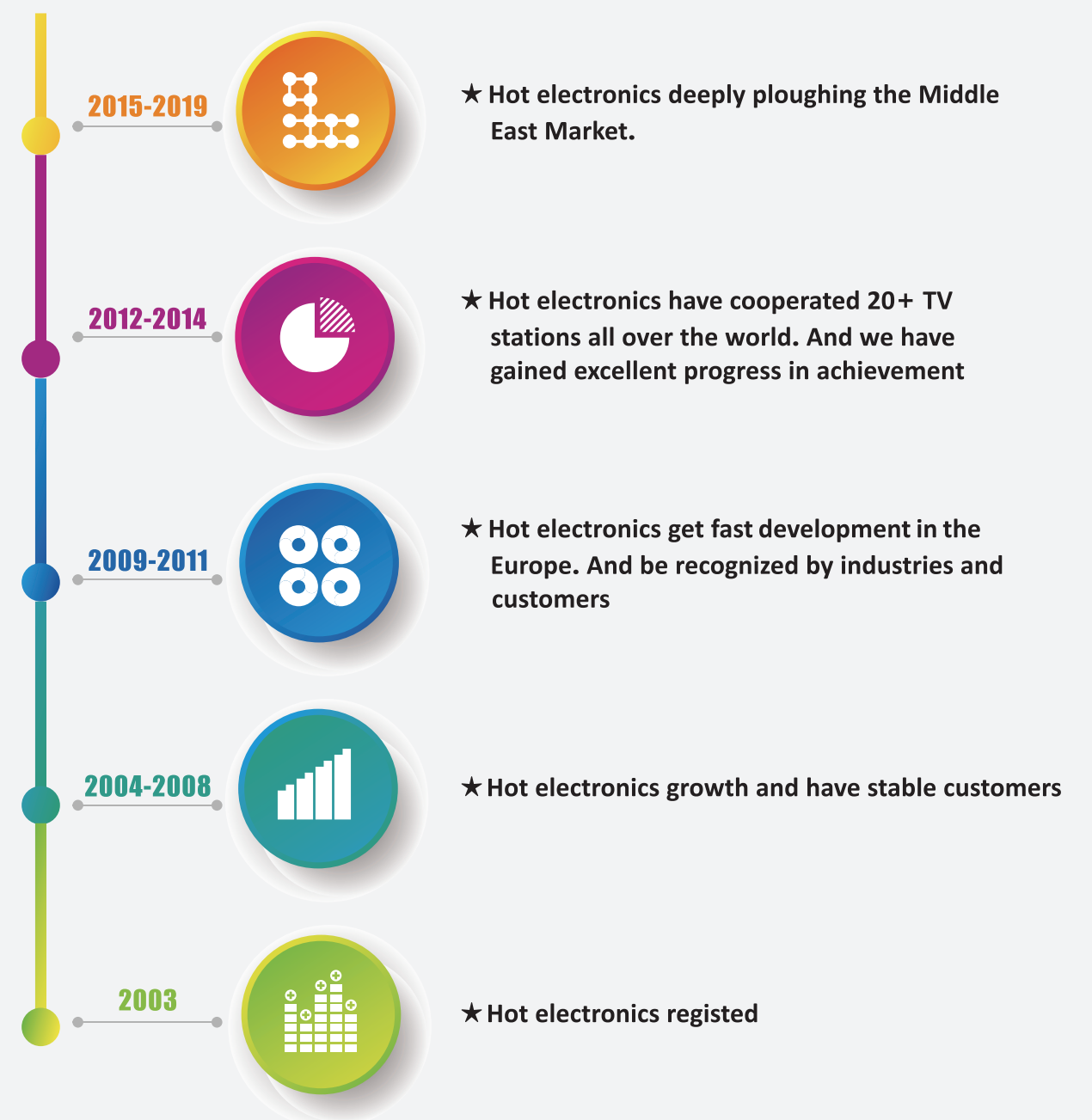
Our Main products include: Hi-tech fine pitch serials Led display, Rental serials Led display, Fix installation led display, Outdoor mesh led display, Transparent led display, Led poster and Stadium led display. Our main markets are: Europe, America and Asia... Our products sold to more than 200 countries and regions. And there are 10,000+ successful projects used to hotel, wedding, advertising, broadcasting, TV station, Sports events, security monitoring, traffic control system etc.

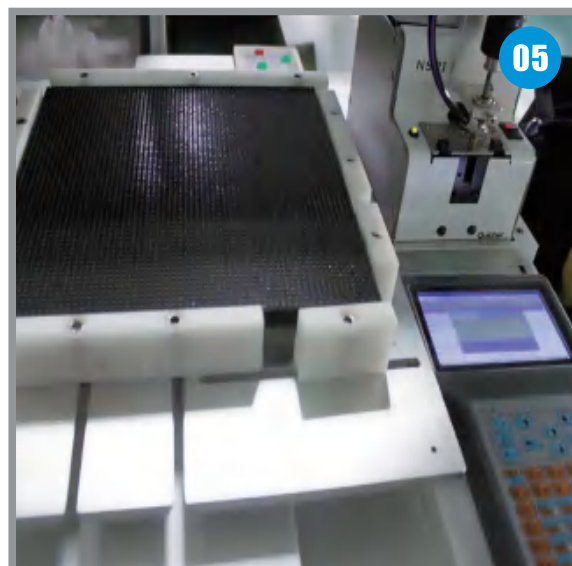
Hot Electronics vision: Keep growing, to be top led display manufacturer around the world

Hot Electronics spirit: Trust Worthy Quality from East

Logo symbol: Red, Green and Blue as the primary colors of LED display, surrounds orange which represents autumn, a harvest seasons. To combine red, green, blue and orange together, it expressed that Hot Electronics keeps working hard to make more achievements. All the members in Hot Electronics will bring hope, beautiful and good service to our customers.

Time Line





FACTORY VIEW

01. Reflow machine-High temperature return furnace

02. SMT machine-Mounting on electric capacity, resistance, IC on PCB board

03. Automatic machine-mounting on signal horn stand and power socket on PCB board

04. Automatic machine- filling glue

05. Automatic machine- hit screws

06. Assembly line

07. Module aging

08. Factory Reception

CONTENTS



● Hi-tech Narrow Pixel Pitch Series	01/37
● Rental Series	05/37
● Fixed Installation Series	11/37
● Outdoor Mesh Led Display	18/37
● Transparent Glass Led Display	22/37
● LED Poster Display	26/37
● Perimeter Led Display	29/37
● Project Cases	32/37

Certificates & Honor



01

Hi-tech Narrow Pixel Pitch Series



- High Refresh Rate
- Low Brightness And High Gray-scale
- Vivid Video Quality
- Seamless Splicing

Hi-tech Narrow Pixel Pitch Series

Pixel Pitch(mm)	0.9	1.2	1.5	1.667	1.8	1.904	2	2.5
LED Configuration	COB	SMD1010	SMD1010	SMD1010	SMD1515	SMD1515	SMD1010	SMD1515
Module Dimension	150*168.75	150*168.75	150*168.75	200*150	150*168.75	200*150	256*128	250*250
Module Resolution	166*187	120*135	100*112	120*90	80*90	105*79	128*64	100*100
Cabinet Dimension	600*337.5	600*337.5	600*337.5	400*300	600*337.5	400*300	512*512	500*500
Cabinet Resolution	664*374	480*270	400*224	240*180	320*180	210*158	256*256	200*200
Viewing Angle(H/V)	140/140	140/140	140/140	140/140	140/140	140/140	140/140	140/140
Brightness(Cds/m2)	>800	>800	>800	>800	>800	>800	>800	>800
Reflash Rate(Hz)	1920-3840	1920-3840	1920-3840	1920-3840	1920-3840	1920-3840	1920-3840	1920-3840
Gray Scale(Bit)	16	16	16	16	16	16	16	16
Power Consumption (Max/Avg W/m2)	300/100	300/100	300/100	300/100	300/100	300/100	300/100	300/100
Ip Rate(Front/Rear)	30/30	30/30	30/30	30/30	30/30	30/30	30/30	30/30
Working Voltage(V)	110/220	110/220	110/220	110/220	110/220	110/220	110/220	110/220
Working Temperature	-20-65℃	-20-65℃	-20-65℃	-20-65℃	-20-65℃	-20-65℃	-20-65℃	-20-65℃
Working Humidity	10%-95%	10%-95%	10%-95%	10%-95%	10%-95%	10%-95%	10%-95%	10%-95%



Golden Ratio 16:9



16:9



4:3



Security Application



Command Centers



Wisdom City



High resolution



Seamless splicing



Indoor Culture

Front installation and maintenance

Hi-tech Narrow Pixel Pitch high resolution series support front Installation and Maintenance, which effectively reduce the difficulty of product installation and maintenance and improve efficiency.



cases

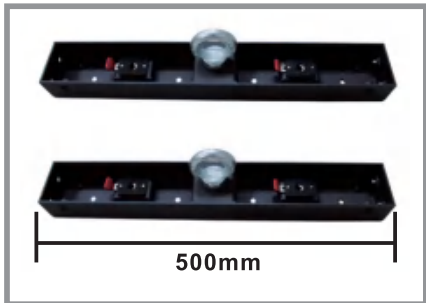


02

Rental Series



- ★ Light weight
- ★ Good Heat Dissipation
- ★ Low Power Consumption
- ★ Convenient Installation
- ★ Easy Move



Rental Series--Indoor Die-casting Aluminum

Pixel Pitch(mm)	2	2.5	2.6	2.97	3.91	4.81
LED Configuration	SMD1010	SMD1515	SMD1515	SMD2121	SMD2121	SMD2121
Module Dimension	256*128	250*250	250*250	250*250	250*250	250*250
Module Resolution	128*64	100*100	96*96	84*84	64*64	52*52
Cabinet Dimension	512*512	500*500 500*1000	500*500 500*1000	500*500 500*1000	500*500 500*1000	500*500 500*1000
Cabinet Resolution	256*256	200*200 200*400	192*192 192*384	168*168 168*336	128*128 128*256	104*104 104*208
Viewing Angle(H/V)	140/140	140/140	140/140	140/140	140/140	140/140
Brightness(Cds/m2)	>1200	>1200	>1200	>1200	>1200	>1200
Reflash Rate(Hz)	1920-3840	1920-3840	1920-3840	1920-3840	1920-3840	1920-3840
Gray Scale(Bit)	14	14	14	14	14	14
Power Consumption(Max/Avg W/m2)	400/150	400/150	400/150	400/150	400/150	400/150
Ip Rate(Front/Rear)	30/54	30/54	30/54	30/54	30/54	30/54
Working Voltage(V)	110/220	110/220	110/220	110/220	110/220	110/220
Working Temperature	-20-65℃	-20-65℃	-20-65℃	-20-65℃	-20-65℃	-20-65℃
Working Humidity	10%-95%	10%-95%	10%-95%	10%-95%	10%-95%	10%-95%



Indoor P2.97 Project in China

Project Size: 160 cabinets
For: East Transportation Cooperation
Project Time: June , 2016

Indoor P2.5 Project in KSA

Project Size: 32 cabinets
For: TV Station
Project Time: March , 2016



Indoor P3.91 Project in Qatar

Project Size: 256 cabinets
For: TV Station
Project Time: 2013



- ★ Light weight
- ★ Waterproof: IP65
- ★ Time-saving Installation
- ★ High Brightness
- ★ Easy Move



Rental Series-- Outdoor Die-casting Aluminum

Pixel Pitch(mm)	2.97	3.91	4.81	5.95	6.25
LED Configuration	SMD1921	SMD1921	SMD2525	SMD3535	SMD3535
Module Dimension	250*250	250*250	250*250	250*250	250*250
Module Resolution	84*84	64*64	52*52	42*42	40*40
Cabinet Dimension	500*500 500*1000	500*500 500*1000	500*500 500*1000	500*500 500*1000	500*500 500*1000
Cabinet Resolution	168*168 168*336	128*128 128*256	104*104 104*208	84*84 84*168	80*80 80*160
Viewing Angle(H/V)	140/140	140/140	140/140	140/140	140/140
Brightness(Cds/m2)	>5000	>5000	>5000	>5000	>5000
Reflash Rate(Hz)	1920-3840	1920-3840	1920-3840	1920-3840	1920-3840
Gray Scale(Bit)	14	14	14	14	14
Power Consumption(Max/Avg W/m2)	400/150	400/150	400/150	400/150	400/150
Ip Rate(Front/Rear)	65/65	65/65	65/65	65/65	65/65
Working Voltage(V)	110/220	110/220	110/220	110/220	110/220
Working Temperature	-20-65℃	-20-65℃	-20-65℃	-20-65℃	-20-65℃
Working Humidity	10%-95%	10%-95%	10%-95%	10%-95%	10%-95%



Outdoor P4.81 for Poland

Project Size: 200 sqm
For: Re-seller
Project Time: March, 2016

Outdoor P 10 for Argentina

Project Size: 80 sqm
For: Events Company
Project Time: 2014



Outdoor P6.25 for Australia

Project Size: 12SQM
For: Events Company
Project Time: 2013

Full front and rear installation and maintenance

1.Front maintenance:modules and power box can be easily dismantled via the maintenance tool



2.Rear maintenance:the magnetic power box cover can be opened with 2 seconds,maintenance efficiency is much higher



Multiple installation ways available



1.Wall surface mounting to save space

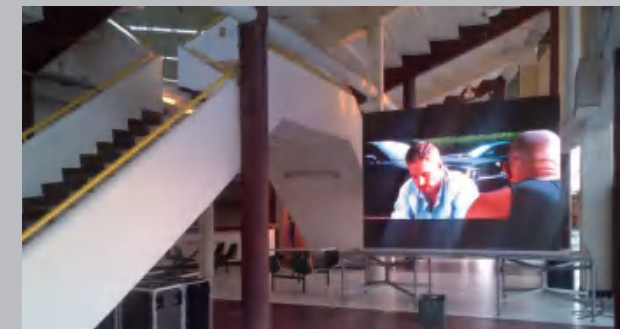


2.Stacking



3.Hanging

cases



03

Fixed Installation Series

Fixed Installation Series ---Indoor



Fixed Installation Series--- Outdoor



Fixed Installation Series ---Indoor

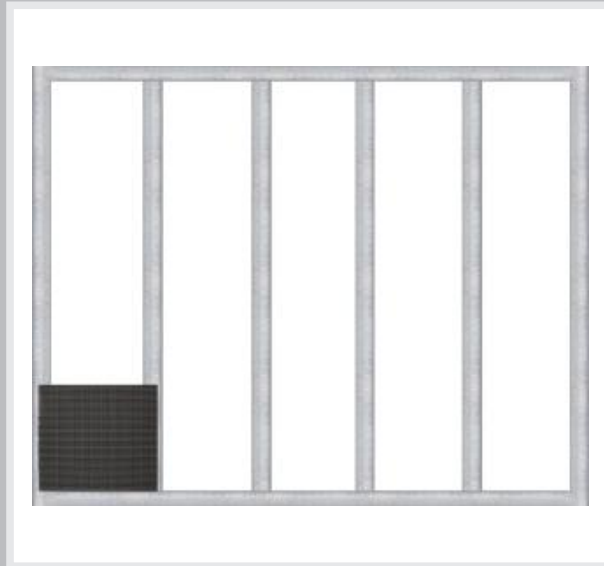
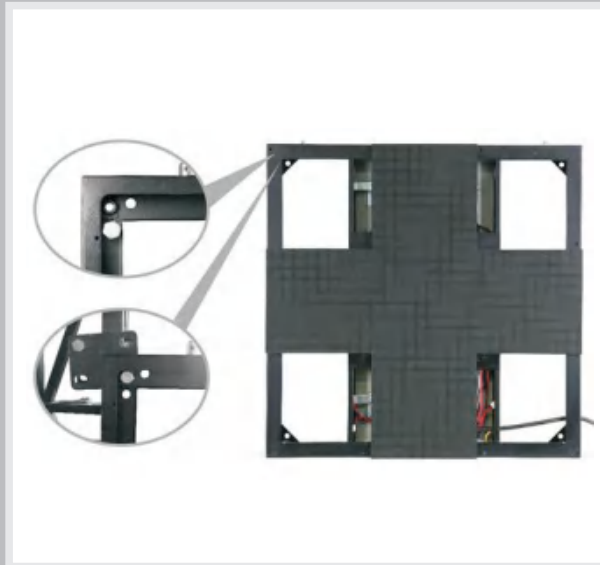
Pixel Pitch(mm)	2	3	4	5
LED Configuration	SMD1010	SMD2121	SMD2121	SMD3528
Module Dimension	256*128	192*192	256*128	320*160
Module Resolution	128*64	64*64	64*32	64*32
Cabinet Dimension	512*512	Customized	Customized	Customized
Viewing Angle(H/V)	140/140	140/140	140/140	140/140
Brightness(Cds/m2)	>800	>1200	>1200	>1200
Reflash Rate(Hz)	1920-3840	1920-3840	1920-3840	1920-3840
Gray Scale(Bit)	16	14	14	14
Power Consumption(Max/Avg W/m2)	300/100	400/150	400/150	400/150
Ip Rate(Front/Rear)	30/30	30/54	30/54	30/54
Working Voltage(V)	110/220	110/220	110/220	110/220
Working Temperature	-20-65℃	-20-65℃	-20-65℃	-20-65℃
Working Humidity	10%-95%	10%-95%	10%-95%	10%-95%
Serviceability	Front/Rear			
Compliant Standard	CE,FCC,ROHS,EMC,BIS			

Fixed Installation Series--- Outdoor

Pixel Pitch(mm)	3	4	5	6	8	10
LED Configuration	SMD1921	SMD1921	SMD2727	SMD3535	SMD3535	SMD3535
Module Dimension	192*192	256*128	320*160	192*192	256*128 320*160	320*160
Module Resolution	64*64	64*32	64*32	32*32	32*16 40*20	32*16
Cabinet Dimension	Customized	Customized	Customized	Customized	Customized	Customized
Viewing Angle(H/V)	140/140	140/140	140/140	140/140	140/140	140/140
Brightness(Cds/m2)	5000-6500	5000-6500	5000-6500	6500-9000	6500-9000	6500-9000
Reflash Rate(Hz)	1920-3840	1920-3840	1920-3840	1920-3840	1920-3840	1920-3840
Gray Scale(Bit)	14	14	14	14	14	14
Power Consumption(Max/Avg W/m2)	400/150	400/150	400/150	400/150	400/150	400/150
Ip Rate(Front/Rear)	65/65	65/65	65/65	65/65	65/65	65/65
Working Voltage(V)	110/220	110/220	110/220	110/220	110/220	110/220
Working Temperature	-20-65℃	-20-65℃	-20-65℃	-20-65℃	-20-65℃	-20-65℃
Working Humidity	10%-95%	10%-95%	10%-95%	10%-95%	10%-95%	10%-95%
Serviceability	Front/Rear					
Compliant Standard	CE,FCC,ROHS,EMC,BIS					

The main characters of this kind of display are:

- Easy installation and light weight can make it amount in the wall or lift against the wall.
- Front access design allows to make thicker LED display, which is suitable for some special locations where there is no more space for rear maintenance.
- Cabinet front service type is suitable for small size screen while module front service type is suitable for any size

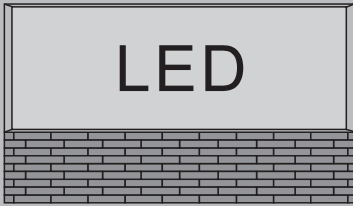


cases

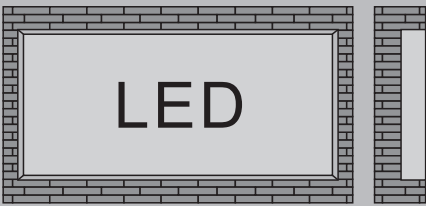




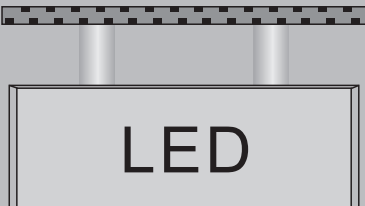
Installation Type Example



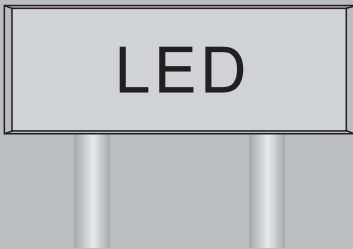
(A)Base Type



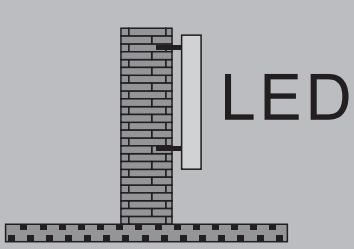
(B)Inlaid Type



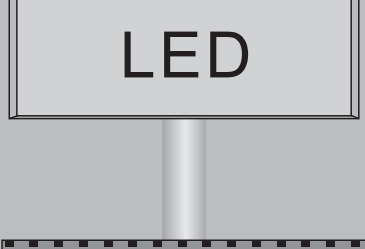
(C)Hang Type



(D)Double Poles Support Type



(E)Wall mounted Type

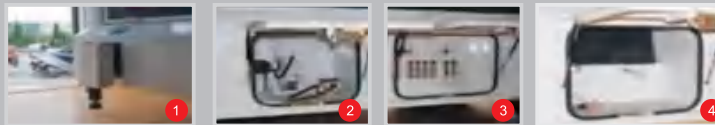


(F)Single Pole Support Type

Above six installation types are most common for outdoor LED display. BaseInlaid, Hang, Double Poles Support are most common for indoor LED display.

Product Features:

- Euro IV emission standards** Used in line with Euro IV emission standard vehicle chassis, more environmentally friendly and lower carbon
- User-friendly multimedia configuration** Outdoor full color led display, monochrome screen bar, roller light box, high-power audio equipment, the effect of media show is outstanding, convenient and stable
- Independent power supply system** Built-in imported Silent diesel generator sets ensure all kinds of parades, road shows, promotional activities be carried out successfully.
- Special chassis and power train** Special chassis and power systems which are jointly developed with well-known car brand ensure safe driving
- Customized LED Vehicle solution** Personalized remodeling and painting solution for promotional projects to achieve better promotional effects



- 1. Anti-wind jack
- 2. Cables with air plug
- 3. Hydraulic pressure controller
- 4. Audio device

04

Outdoor Mesh Led Display

Outdoor Mesh Led Display

Ultra slim & thin design

30%-60% lighter than traditional one, thinnest part only 12mm
reduce the structure load and installation cost.



Thinnest part only 12mm



Only 7.8KG



Energy saving



HD display



Fast installation



High resolution



Seamless splicing



Ultra wide Angle

Mesh LED Display

Pixel Pitch(mm)	8-16	16-16	16-16	16-33
LED Lamp Type	SMD3535	SMD3535	DIP346	DIP346
LED Configuration	SMD 3IN1	SMD 3IN1	1R1G1B	1R1G1B
Module Size(H*W*T)	1000*9.5*11	1000*9.5*11	1000*10*18	1000*10*18
Cabinet Size(H*W*T)	1000*500*60	1000*500*60	1000*500*60	1000*500*60
Viewing Angle(H/V)	120/120	120/120	120/60	120/60
Brightness(Cds/m2)	>6000	>6000	>6500	>6500
Transparency	38%	38%	38%	70%
Reflash Rate(Hz)	1920-3840	1920-3840	1920-3840	1920-3840
Gray Scale(Bit)	14	14	14	14
Power Consumption(Max/Avg W/m2)	450/150	450/150	450/150	450/150
Ip Rate(Front/Rear)	65/65	65/65	65/65	65/65
Working Voltage(V)	110/220	110/220	110/220	110/220
Working Temperature	-20-65°C	-20-65°C	-20-65°C	-20-65°C
Working Humidity	10%-95%	10%-95%	10%-95%	10%-95%

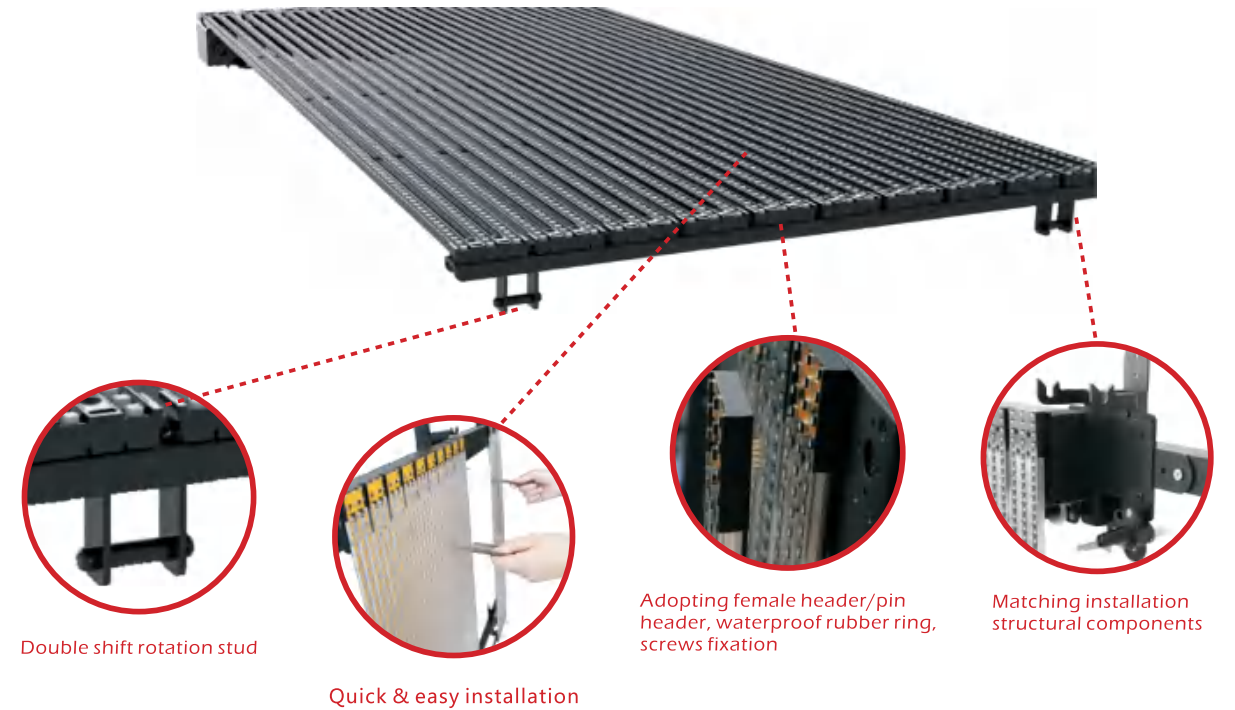
Mesh Curtain Led Display:

Outdoor Mesh led display are more and more widely used outside building for its transparency and light weight. Main advantages as below:

- ★ Extremely light weight ---16kgs/sqm, can be install outside building glass wall.
- ★ Fast installation --- Average 10 seconds to install an individual cabinet.
- ★ Stability long life time --- Low consumption of electricity to increase the lifetime of LEDs.
- ★ Energy efficient --- Average 150W per sqm
- ★ Simple structure --- Reduce the cost of steel structure (Average 5 USD per sqm)
- ★ Labor efficient --- Reduce the labor time and cost by 60%



Quick installation:



cases



cases



05

Transparent LED Display

Transparent Led Display



High transparency



HD display



Fast installation



Future sense



Light weight



Ultra wide Angle

Transparent Led Display

Pixel Pitch(mm)	3.9-7.8	7.8-7.8	10.4-10.4	15.6-15.6
Technology	Front lighting	Front lighting	Front lighting	Front lighting
LED Configuration	SMD2020/SMD1920	SMD2020/SMD1920	SMD2020/SMD1920	SMD2020/SMD1920
Module Size(H*W*T)	500*125	500*125	500*125	500*125
Cabinet Size(H*W*T)	1000*500/ Customized	1000*500/ Customized	1000*500/ Customized	1000*500/ Customized
Viewing Angle(H/V)	140/140	140/140	140/140	140/140
Brightness(Cds/m2)	1500/3500/5500	1500/3500/5500	1500/3500/5500	1500/3500/5500
Transparency	65%	68%	75%	85%
Reflash Rate(Hz)	1920-3840	1920-3840	1920-3840	1920-3840
Gray Scale(Bit)	14/16	14/16	14/16	14/16
Power Consumption(Max/Avg W/m2)	800/300	800/300	800/300	800/300
Weight(kg/m2)	16	15	13	13
Working Voltage(V)	110/220	110/220	110/220	110/220
Working Temperature	-20-65°C	-20-65°C	-20-65°C	-20-65°C
Working Humidity	10%-95%	10%-95%	10%-95%	10%-95%

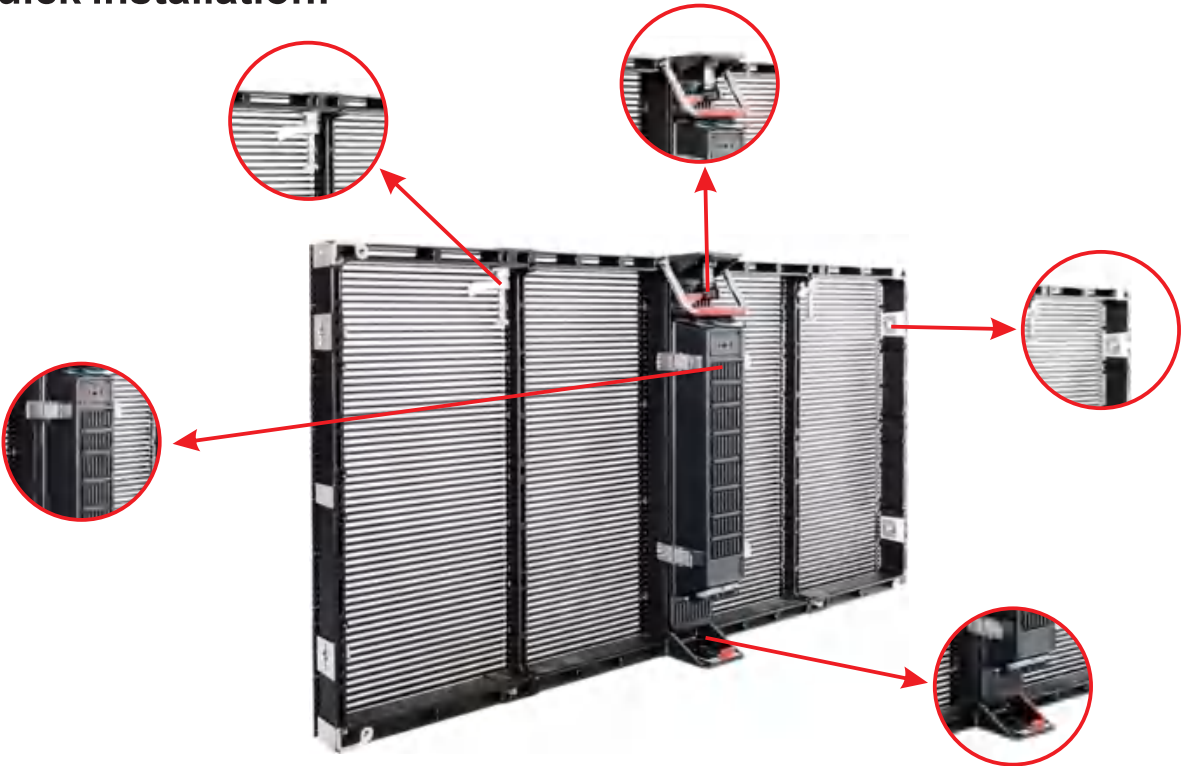
Transparent Glass Led Display:

After long time technical innovation and development, transparent LED display had been widely accepted by the customers worldwide.

With the advantages of good heat dissipation, fast installation, high transparency, high brightness and easy maintenance, transparent LED display could be used behind any shape of glass surface, and keep the internal natural lighting and viewing, thats the reason why its the best choice of glass wall advertising.



Quick installation:



Transparent Led Display

Pixel Pitch(mm)	3.9-7.8	7.8-7.8	10.4-10.4
Technology	Side lighting	Side lighting	Side lighting
LED Configuration	SMD1206/SMD3510	SMD1206/SMD3510	SMD1206/SMD3510
Module Size(H*W*T)	500	500	500
Cabinet Size(H*W*T)	1000*500/ Customized	1000*500/ Customized	1000*500/ Customized
Viewing Angle(H/V)	160/160	160/160	160/160
Brightness(Cds/m2)	5500	5500	5500
Transparency	65%	68%	75%
Reflash Rate(Hz)	1920-3840	1920-3840	1920-3840
Gray Scale(Bit)	14/16	14/16	14/16
Power Consumption(Max/Avg W/m2)	800/300	800/300	800/300
Weight(kg/m2)	18	17	15
Working Voltage(V)	110/220	110/220	110/220
Working Temperature	-20-65℃	-20-65℃	-20-65℃
Working Humidity	10%-95%	10%-95%	10%-95%

cases



06

LED Poster Display

Wi-Fi Intelligent Led Adverting Board

Product Features:

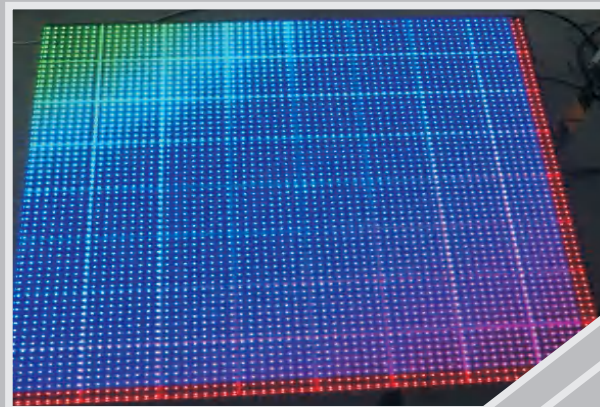
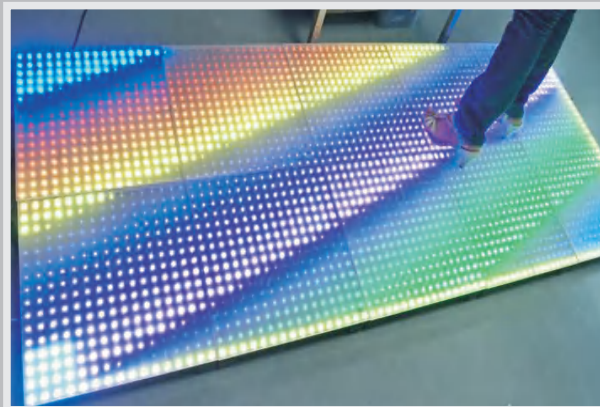
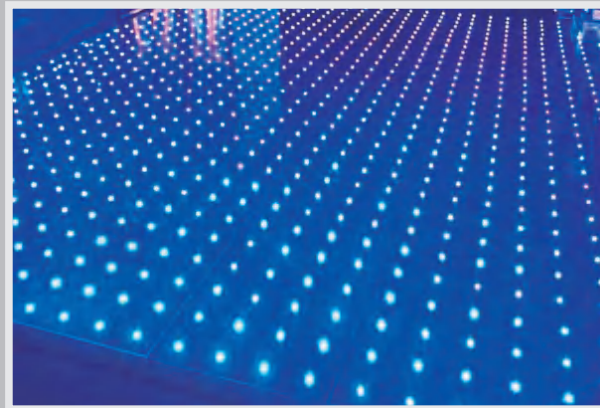
- Adopt new Wi-Fi control technology, more energy saving and environmental friendly compared with traditional led screen.
- Standard Wi-Fi interface, which is easy and practical to access to all kinds of wireless network 4G+3G+2G+Wi-Fi, and USB support.
- Attractive & Convenient design, no assembly and easy to use for the End user.
- High brightness & Waterproof. Brightness can reach to 5500cd/m²



Dance Floor Led Display

Characters:

- ★ Ultra-slim design, metal housing, non-skid treatment toughened glass cover.
- ★ Outdoor or indoor using, protection level can reach IP63
- ★ Controlled by LED Flash Computer Control System



07

Perimeter Led Display

Perimeter Led Display

- 1. Perfect height: can be configured between 800mm and 1280mm.
- 2. Protect players from inquiries: soft and flexible masks design.
- 3. Portable and Easy to transport
- 4. Adjustable inclination Angle: Cabinets are supported with base and stand with adjustable angle, to get best view and best camera shootings.

281 Trillion Colors

- Brightness:6000nits;
- Gray Scale:65536 Level;
- High refresh rate:≥2000Hz
(Photos taking with no flickers).



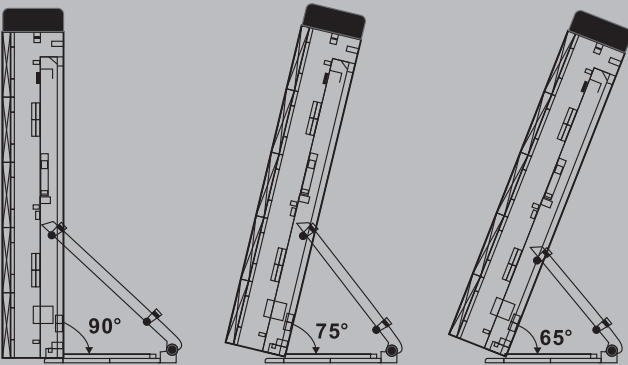
Cabinet Safety Design

- Players injury protection with top cushion rubber



Adjustable Cabinet Angle

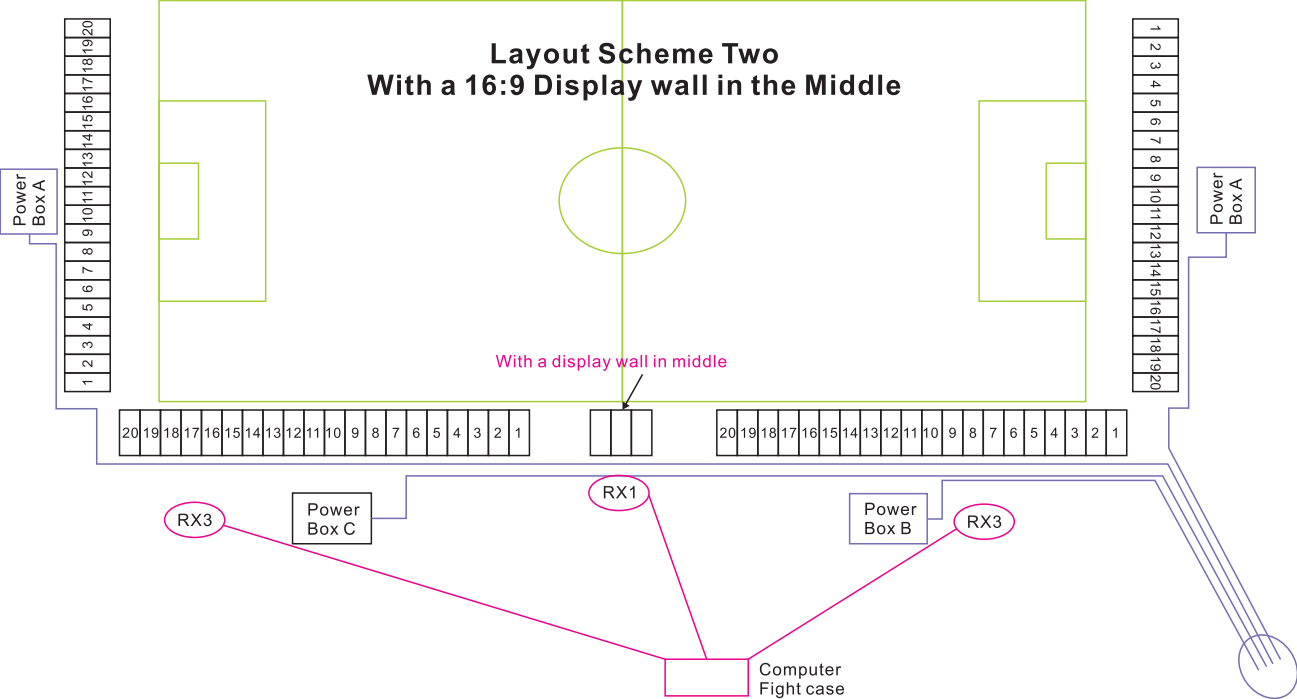
- Cabint angle adjusted freely 60~90 degrees;
- Enhance viewers' visual enjoyment.



140°Viewing Angle

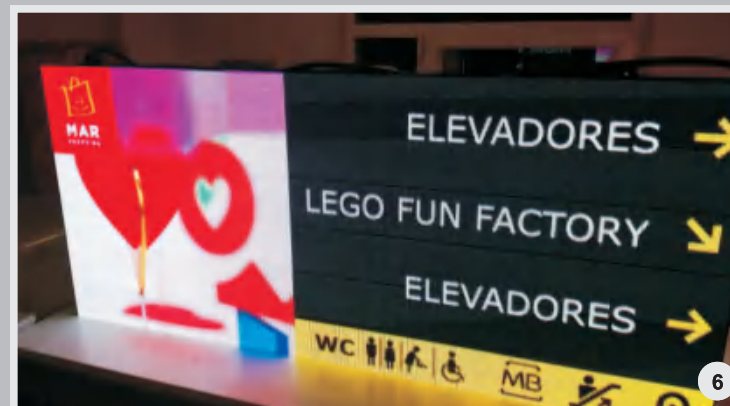
- SMD lamps provide wider viewing angle both vertically and horizontally.

Perimeter Led Display

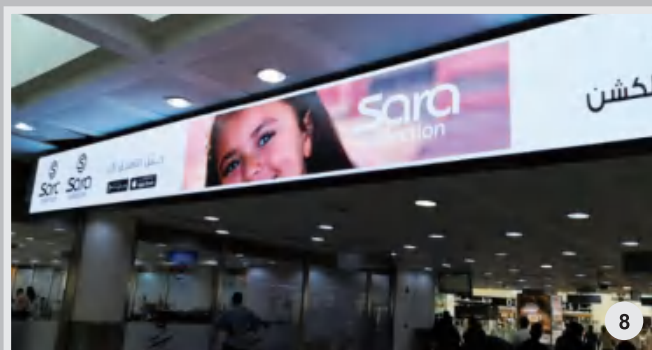
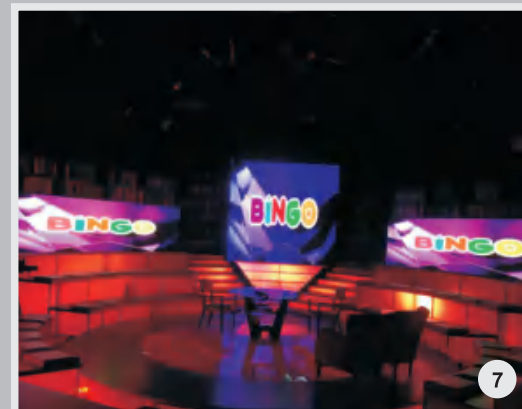
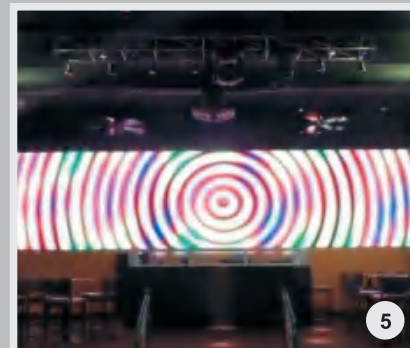


08

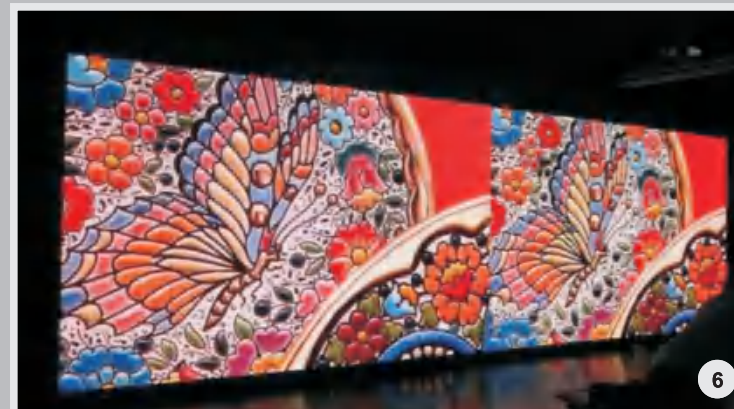
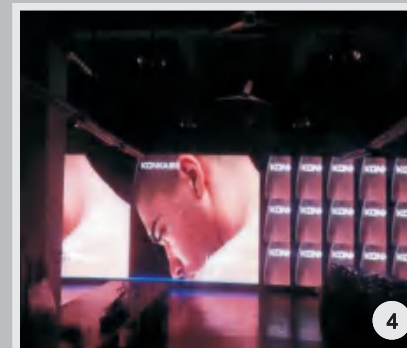
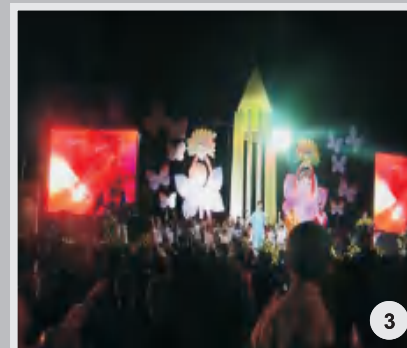
Project Cases



1. Greece Outdoor P8
2. Egypt indoor rental P3
3. Israel outdoor P10
4. Qatar's interior solid P3
5. Sri Lanka truck screen P6
6. Portugal Indoor P2.5
7. Dubai Indoor P6
8. Mexico Indoor P3.91



1. Qatar TV Station indoor P4
2. Qatar TV Station
3. Indonesia Outdoor P8
4. Australia Outdoor P6
5. America Indoor P10
6. KSA TV Station
7. Serbian TV indoor P4
8. Kuwait airport P3



1. Singapore TV Station Indoor P4
2. Middle east indoor P3.91
3. Iran Led Rental
4. Poland Outdoor P10
5. Sri lanka Led Truck
6. Poland Outdoor P10
7. Mexico Outdoor P8
8. China TV Indoor



Our Guarantee

Two Years Guarantee: Within 2 years guarantee period, any failure part is changeable for free not due to the misused cause. After 2 years, only parts costs will be charged.

Project
consultation

Our Service

On-site installation
assistant

Structure
construction
suggestion

Engineer regular
operation training

Our Vision

- ★ Be the first class LED product manufacturer
- ★ Be a leading global LED product manufacturing base
- ★ Be a integrity LED product expert of designing, researching & developing, system controlling.